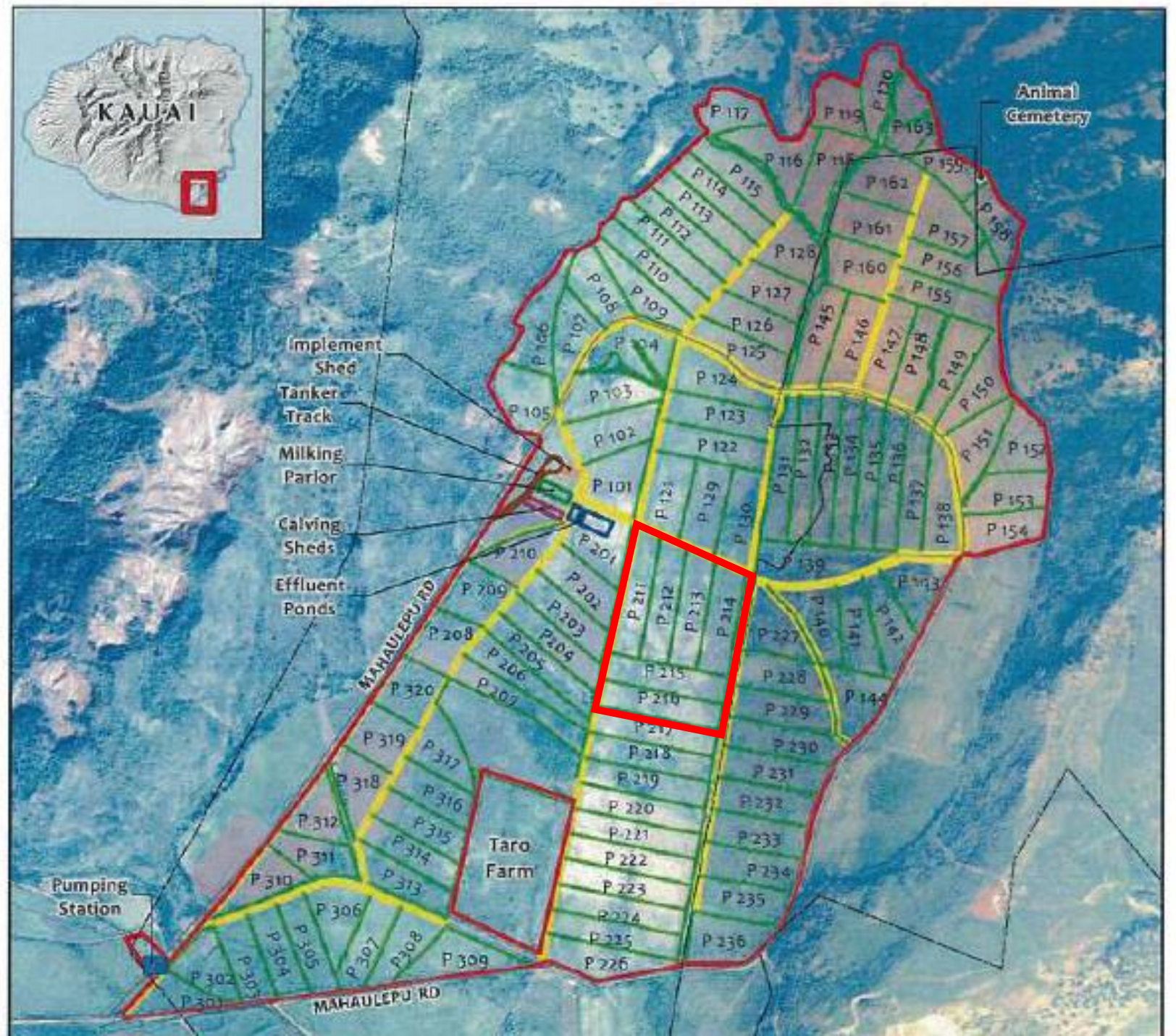


From Table 7

Total Acreage	
Field	Acres
P 211	4.62
P 212	4.62
P 213	4.62
P 214	4.62
P 215	4.59
P 216	4.54

Total = 27.6 Acres
 Total = 1.2E6 Ft²



Cow Density = 330 Cows / 4 Acres

Cow Density = 82.5 Cows/Acre

Cows Randomly Arranged Over 27.6 Acres Representing Fields P211 – P216

Total Cows = $82.5 * 27.6 = 2278$

All Possible Orientations Of Cow Represented by 5.5 ft Diameter Circle

Minimum Separation Between Adjacent cows = 2.5 ft

